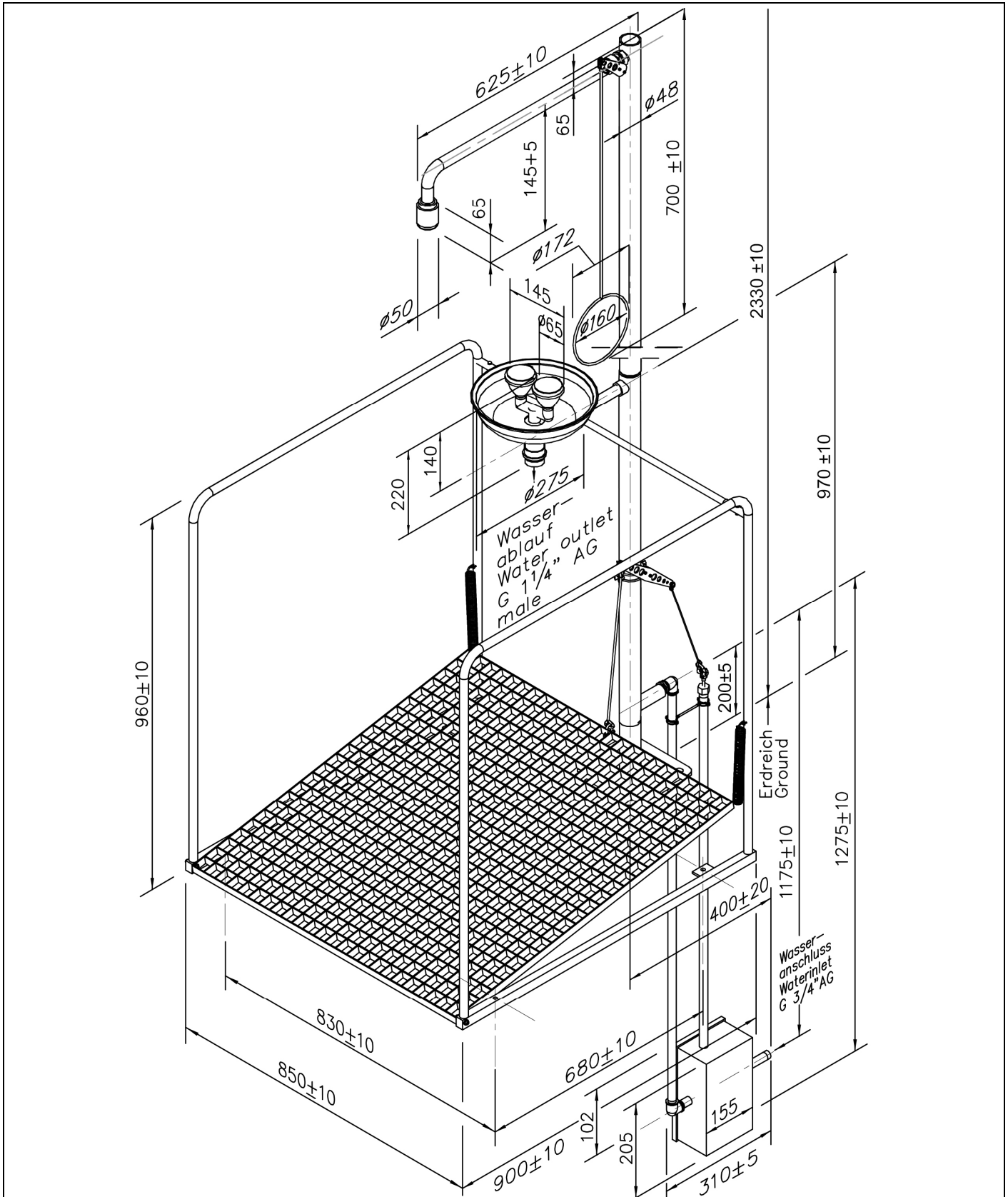


BR 886 395

PremiumLine frostprotected self-draining eye shower / safety shower station with surrounding protection cage, with underfloor actuation



Technical description

PremiumLine frostprotected self-draining eye shower / safety shower station with surrounding protection cage, with underfloor actuation

- frame made of stainless steel tubes, dimensions (H x W x D): 960 x 850 x 900 mm
- platform actuation for eye shower made of galvanized steel, mounted with chain on angle diversion, dimensions (W x D): 800 x 800 mm
- angle diversion made of stainless steel, with stainless steel attachment to the standpipe
- ball valve made of stainless steel as underfloor actuation, mounted in stainless steel cabinet, with pull rod activation 1000 mm, DIN-DVGW tested and certificated, with automatic self-draining in 1000 mm depth
- base plate with 4 mounting holes of stainless steel, polished, dimensions 200 x 200 mm
- stand pipe 1 1/4" of stainless steel two-part, polished, with top and bottom water inlet 1 1/4" female, total height 2330 mm
- connection piece 3/4" of stainless steel, for easy installation and alignment of the shower
- ball valve 3/4" of stainless steel, with quick connect system and pull rod actuation, DIN-DVGW tested and certificated
- pull rod with ring handle of stainless steel, polished, length 700 mm
- wall shower arm 3/4" of stainless steel, polished, projection 625 mm
- integrated automatic flow regulation 50 l/min. for a spray pattern acc. to the norms at a specified operating range of 1.5 to 3 bar dynamic water pressure
- high-performance shower head of stainless steel, polished, with improved spray pattern, corrosion resistant, largely calcification- and maintenance-free, very robust, self-draining
- sign for body safety shower according to EN ISO 7010 und ASR A1.3, self-adhesive PVC-film, 150 x 150 mm, viewing distance 15 metre
- integrated PremiumLine safety eye shower with stainless steel bowl, mounting height 970 mm
- connection pipe of stainless steel for easy installation and alignment of the shower, polished
- bowl made of stainless steel, diameter 275 mm, polished, water outlet 1 1/4" male
- high-performance spray heads made of stainless steel for large-scale dispersion of water, with plastic spray plate, largely free of calcification, with rubber sleeves and sealed dust caps with folding mechanism, mounted over distributor fork
- integrated flow regulation 14 litre / minute for a standard-compliant jet pattern at a specified working range of 2.5 to 5 bar flow pressure
- sign for eye shower according to EN ISO 7010 und ASR A1.3, self-adhesive PVC-film, 100 x 100 mm, viewing distance 10 metre
- according to BGI/GUV-I 850-0, DIN 1988 and EN 1717
- according to ANSI Z358.1-2014, EN 15154-1:2006, EN 15154-2:2006 und EN 15154-5:2019
- DIN-DVGW tested and certificated

Manufacturer: B-SAFETY or equal
 Article-No.: BR 886 395

Technical specifications

Minimum flow pressure:	1.5 bar
Operating pressure:	1.5 to 3 bar
Flow rate body shower:	50 l/min
Flow rate eye shower	14 l/min
Water inlet:	3/4" male

Compliance with standards






- EN 15154-1:2006
- EN 15154-2:2006
- EN 15154-5:2019
- ANSI Z358.1-2014

Approvals

- DIN-DVGW, DVGW, NW-0416CL0425
- DIN-DVGW, DVGW, NW-0417CL0263
- GOST-R, Zertifikats-Nr. 0615463

Product overview	
BR 886 395	PremiumLine frostprotected self-draining eye shower / safety shower station with surrounding protection cage, with underfloor actuation - flow rate 50 l/min (hazard class I according to EN 15154-5:2019)
BR 886 395 / 75L	PremiumLine frostprotected self-draining eye shower / safety shower station with surrounding protection cage, with underfloor actuation - flow rate 75 l/min / 20 GPM (hazard class II according to EN 15154-5:2019)
BR 886 395 / 110L	PremiumLine frostprotected self-draining eye shower / safety shower station with surrounding protection cage, with underfloor actuation - flow rate 110 l/min (hazard class III according to EN 15154-5:2019)

Accessories for industrial safety showers

Product overview	Model	Material	Water inlet	Water outlet	Article-No.
	Safety sign "Eye Shower and Safety Shower" Inclusive fastening for mounting on the shower arm. Dimensions: 320 x 180 mm	PVC	-	-	BR 870 100
	Maintenance ball valve for eye showers and safety showers with removable trigger lever.	stainless steel	3/4" female	3/4" female	BR 830 955
	Thermostatic mixing valve for eye showers and safety showers, adjustment range 20 - 43°C, scald protection 43°C, flow rate 60 l/min at 2 bar flow pressure.	brass	3/4" male and 1" male	3/4" male and 1" male	BR 710 950
	Flow switch for eye showers and safety showers, protection degree IP 65, electrical supply with 1.5 m cable.	brass	3/4" female	3/4" female	BR 710 800
	Flow switch for eye showers and safety showers, protection degree IP 65, electrical supply with 1.5 m cable. EX-Zone 1 & 2.	brass	3/4" female	3/4" female	BR 710 800EX
	Alarm system for eye showers & safety showers with siren-/flashlight combination. Prewired junction box inclusive electronic switch. Electrical supply: 230 V - 50 Hz	-	-	-	BR 015 800