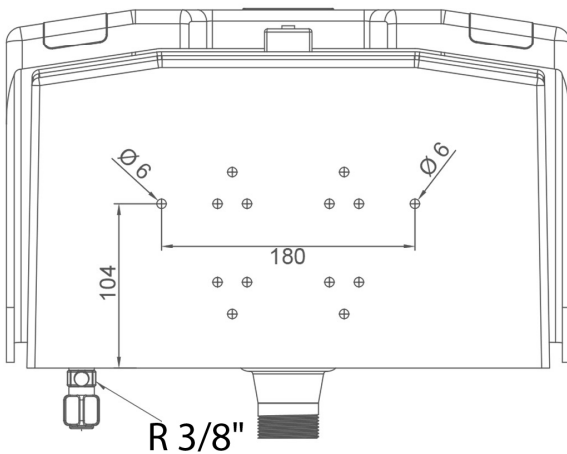
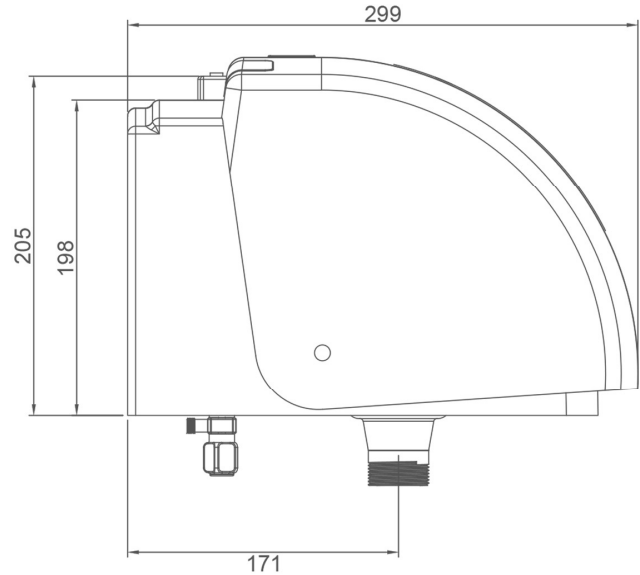
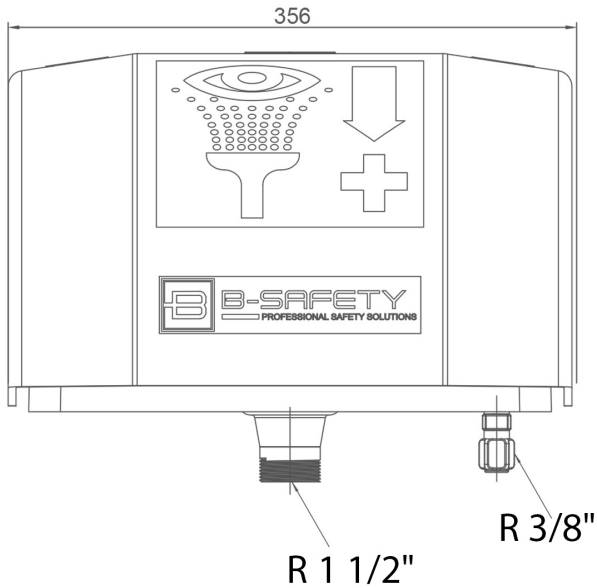


**BR 850 005**

**PremiumLine eye-/face wash unit with bowl and lid, wall mounted**



#### Technical description

PremiumLine eye-/face wash unit with bowl and lid, wall mounted

- housing, lid and bowl made of UV and impact resistant ABS plastics, water outlet 1 ½" male
- integrated protective cover against dust
- actuation by pulling down the lid
- ball valve 3/8" of stainless steel, with lever actuation by lid, DIN-DVGW tested and certificated
- aerators made of brass with a very limited spray pattern, chrome-plated
- with integrated flow regulation valve 3/8" for setting the desired spray height and flow rate, water inlet 3/8" male
- inclusive sign for eye shower according to EN ISO 7010 und ASR A1.3 on the lid, dimensions 170 x 170 mm, viewing distance 17 metre
- height 245 mm, width 356 mm, depth 305 mm
- mounting height (lower edge) 910 mm (± 200 mm)
- according to BGI/GUV-I 850-0, DIN 1988 and EN 1717
- according to ANSI Z358.1-2014 and EN 15154-2:2006
- DIN-DVGW tested and certificated

Manufacturer: B-SAFETY or equal  
Article-No.: BR 850 005

#### Technical specifications

Minimum flow pressure:	2.5 bar
Operating pressure:	2.5 to 5 bar
Flow rate:	14-20 l/min
Water inlet:	3/8" male
Water outlet:	1 ½" male
Dimensions (H x W x D):	245 x 356 x 305 mm

#### Norm conformity

- EN 15154-2:2006  
- ANSI Z358.1-2014

#### Approvals






- DIN-DVGW, NW-0417CL0263

Material overview	Material	Material description
Aerators:	brass, chrome-plated	CW617N
Flow regulator:	brass, chrome-plated	CW617N
Housing:	plastic ABS	-
Protective dust caps:	plastic ABS	-
Ball valve:	stainless steel	AISI 316
Sign for eye shower:	PVC-foil	-

#### Product overview

<b>BR 850 005</b>	PremiumLine eye-/face wash unit with bowl and lid, wall mounted
-------------------	---

## Accessories for eye-face showers

Product overview	Model	Material	Water inlet	Water outlet	Article-No.
	Maintenance ball valve for hand-held eye showers with removable trigger lever.	brass	1/2" female	1/2" female	BR 710 100
	Reducing nipple for attaching the maintenance ball valve	brass	1/2" male	3/8" female	RN1238MSOB
	Thermostatic mixing valve for eye showers, adjustment range 20 - 43°C, scald protection 43°C, flow rate max. 20 l/min.	brass	1/2" male and 3/4" male	1/2" male and 3/4" male	BR 710 940
	Flow switch for eye showers and safety showers, protection degree IP 65, electrical supply with 1.5 m cable.	brass	3/4" female	3/4" female	BR 710 800
	Alarm system for eye showers & safety showers with siren-/flashlight combination. Prewired junction box inclusive electronic switch.  Electrical supply: 230 V - 50 Hz	-	-	-	BR 015 800