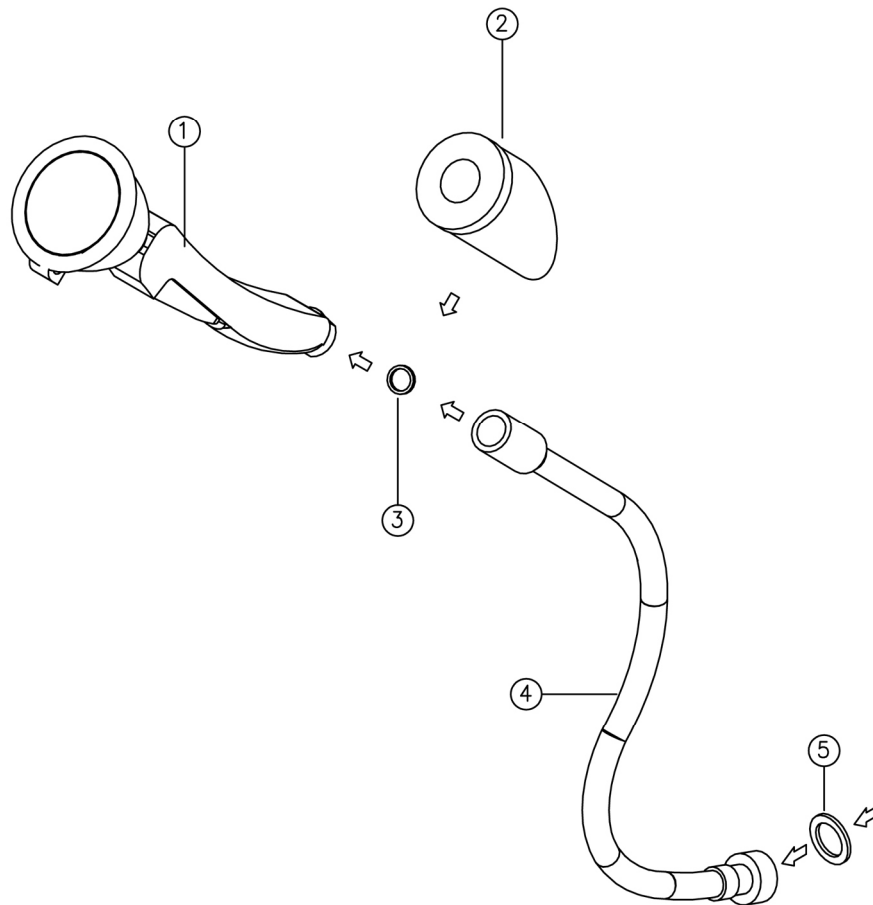




Detail:



| Part No. | Article No. | Quantity | Description                           | Material                               | Weight  |
|----------|-------------|----------|---------------------------------------|--|---------|
| 1        | F712        | 1        | Handle with one spray head            | DZR-brass CW724R (water-bearing parts) | 0.36 kg |
| 2        | BR 710 275  | 1        | Table mounting accessories            | ABS, brass                             | 0.25 kg |
| 3        |             | 1        | Flat gasket (included in the hose)    | EPDM                                   | 0.01 kg |
| 4        | BR 710 415  | 1        | Stainless steel covered hose, 1500 mm | Stainless steel AISI 304, brass        | 0.31 kg |
| 5        | -           | 1        | Flat gasket (included in the hose)    | EPDM                                   | 0.01 kg |
| 6        | BR 710 600  | 1        | High-performance spray head           | POM Hostaform C13021, EPDM             | 0.06 kg |
| 7        | 96B001      | 1        | Stainer gasket                        | Stainless steel AISI 304, TPE          | 0.01 kg |
| 8        | BR 205 010  | 1        | Emergency sign, 100 x 100 mm          | PVC film, self-adhesive                | 0.01 kg |
| -        | 97B-RUECK   | 1        | Backflow preventer                    | POM, silicone                          | 0.01 kg |
| -        | 97B07       | 1        | Flow regulator 7 l/min (green)        | POM, EPDM                              | 0.01 kg |