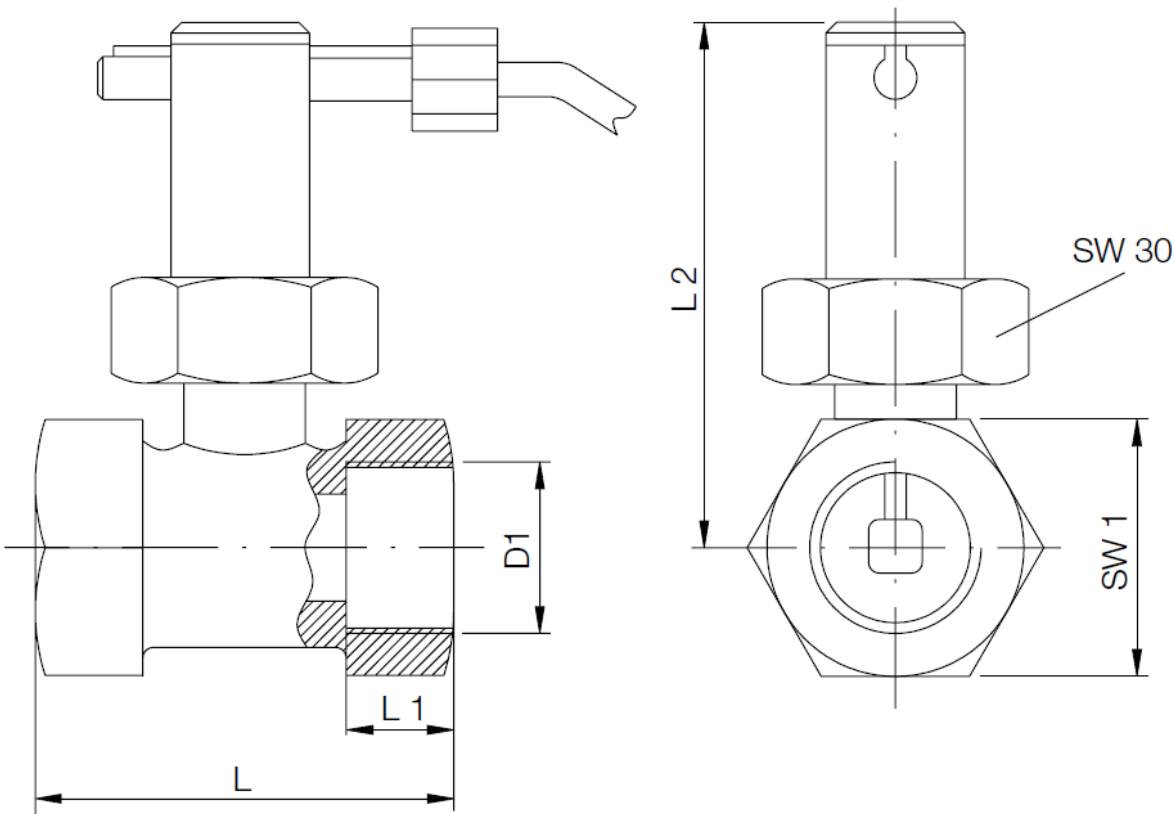


BR 710 8XX Flow switch for eye showers and safety showers



Product overview

Article-No.:	D1	DN	Switch ranges		Q _{max}	L	L1	L2	1 AF
			rising flow rate	falling flow rate					
BR 710 834 (/ EX)	3/4" female	20	7.7-13.4 l/min	5.9-13.0 l/min	80 l/min	52 mm	15 mm	81.5 mm	32
BR 710 812 (/ EX)	1/2" female	15	2.5-6.4 l/min	1.9-6.3 l/min	45 l/min	50 mm	10 mm	80 mm	27
BR 710 854 (/ EX)	1 1/4" female	32	19.7-36.8 l/min	20.0-32.4 l/min	160 l/min	50 mm	15 mm	112 mm	46

Technical description

Flow switch for eye showers and safety showers

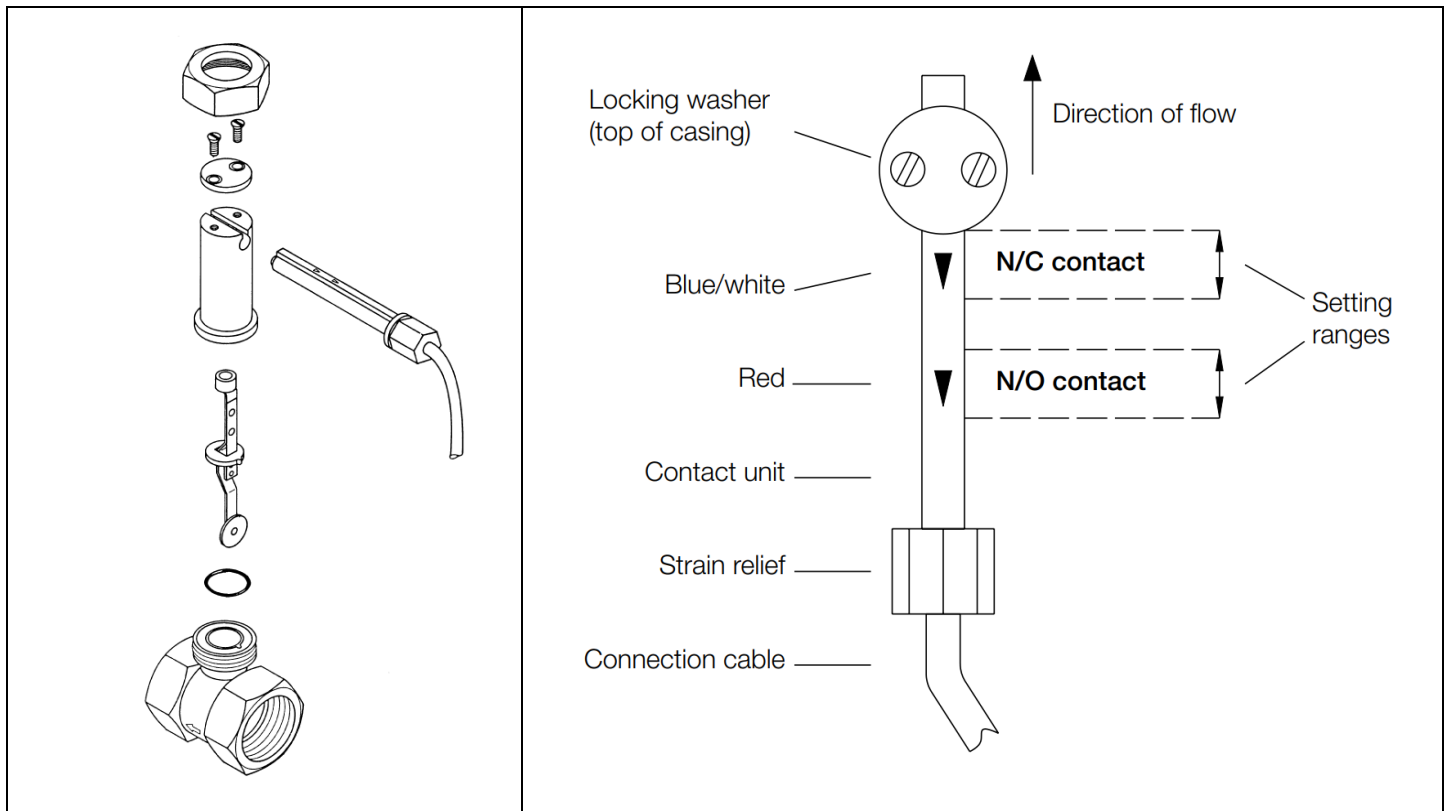
The flow switch of the series BR 710 8XX are used wherever simple, inexpensive and nevertheless reliable volume flow is required. Depending on the flow velocity or flow rate, the baffle plate is deflected and moves the permanent magnet via the balance arm into the operating distance of the reed contact located outside the flow medium. The force of the leaf spring, which also serves as a support for the balance beam, returns the baffle plate to the rest position when the flow stops.

- maximum flow pressure 25 bar, Operating pressure 10 bar
 - tolerance of the switching points +/- 15%
 - protection type IP 65
 - preferred mounting position upright, (horizontal)
 - inlet /outlet min. 5x DN
 - water inlet 1/2" female to 1 1/4" female (according to product selection)
 - water outlet 1/2" female to 1 1/4" female (according to product selection)
 - material Housing, sleeve, parts in contact with media made of stainless steel
- Manufacturer: KOBOLD (B-SAFETY) or equal
Article-No.: BR 710 8XX

Technical specifications

Maximum flow pressure:	25 bar
Operating pressure:	10 bar
Medium temperature:	min. -20°C / max. +70°C
Tolerance of the switching points:	+/- 15%
Protection type:	IP 65
Preferred mounting position:	upright, horizontal
Inlet /outlet:	min. 5x DN
Flow direction:	only in one direction
Water inlet:	1/2" female to 1 1/4" female
Water outlet:	1/2" female to 1 1/4" female
Dimensions (H x W x D):	according to drawing / table
Switching contact:	bistable reed contact as NO / NC contact
Electrical Details:	max. 2 A, max. 230 V AC/DC, max. 40 W, max. 40 VA
Electrical connection:	1.5 m cable (2-core)

Material-overview	Material	Material description
Case:	stainless steel	AISI 304
Baffle plate:	stainless steel	AISI 304
Leaf spring:	stainless steel	AISI 301
Balance arm:	stainless steel	AISI 301
Sleeve:	stainless steel	AISI 304
Magnet:	oxide ceramics	-
Seal:	NBR	-
Contact tube:	polyamide, glass fibre reinforced	-
Cable:	PVC (standard 1.5 m)	-



Switching point setting

To set the switching point, simply loosen the locking disc on the upper part of the housing and move the switching unit. A blue, white or red arrow on the switching unit serves as an adjustment aid. The front edge of the locking disc serves as a setting mark.

N/O contact

The switching volume can be adjusted in the area of the red arrow. By moving the switching unit in the direction of flow, the minimum switching values given in the table are obtained. By moving the switching unit against the direction of the flow, the maximum switching values given in the table are obtained.

N/C contact

The switching volume can be adjusted in the area of the blue (white) arrow. By moving the switching unit in the direction of flow, the minimum switching values given in the table are obtained. By moving the switching unit against the direction of flow, the maximum switching values given in the table are obtained.

Once the setting has been made, tighten the locking disc again.