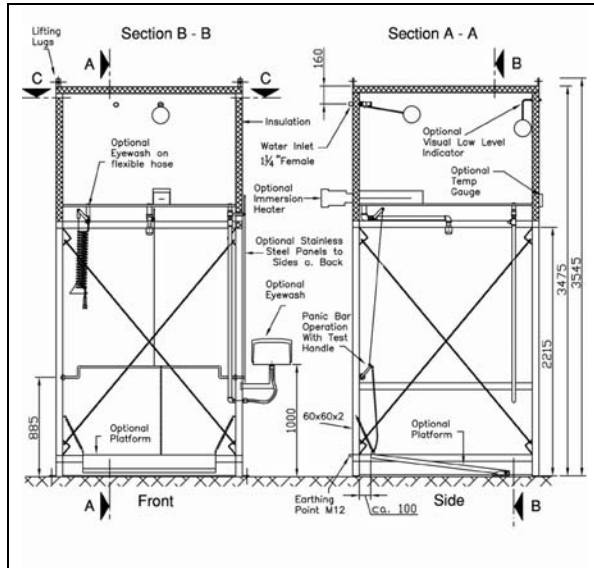


PremiumLine tank safety shower 2000 litre



- frame made of massive stainless steel square-tubes
 - robust and corrosion resistant tank made of stainless steel, tank capacity 2000 litre, flush time about 50 minutes at autarkic mounting, with sign for eye/body safety shower according to DIN 4844-2-D and BGV A8
 - insulation made of polyurethan
 - green/white stripes for the visibility of the tank safety shower
 - shower arm made of stainless steel, total length 490 mm
 - ball valve made of stainless steel, with push bar made of stainless steel, incl. external test handle made of stainless steel
 - high-performance shower head made of chemical resistant plastics, with improved spray pattern, corrosion resistant, largely scale and maintenance-free, very robust, self-draining
 - flow rate 40 l/min.
 - water inlet 1 1/4" female, incl. overflow protection
 - total height 3545 mm, width 1800, depth 1660 mm
 - explosion-proof construction for EX-Zone 1 & 2, inclusive ATEX-certification for complete construction)
 - statics quality inspection according to current DIN-norms
 - tank safety shower of class I according to DIN 12899-3:2009
 - according to ANSI Z358.1-2004 and DIN 12899-3:2009
- Manufacturer: B-SAFETY or equal
Article-No.: BR 900 200